

EXPERT
SOFTWARE

Hand- writing Fonts



Online User's Guide



Handwriting Fonts

Credits

Product Manager: Susan Azpurua

Quality Assurance: George Moneo, Patty Fuquen, James H. Smith IV, Randy Abdool, Rick Haylock, Manny Perez, Sean Pereira

Documentation Layout: Rebecca A. Ergen

Documentation Editor: Mia Leonin

Development Art Department: Greg Lampkin, Omar Rodriguez Jr., Glen Milan, Enrique Saldarriaga, Noel Fung

Production Assistant: John Hughes

Online Manual Edition: May 1996

Special thanks to Dinorah Cepeda.

Copyrights and Trademarks

Program© 1996 Expert Software. The Expert Brand logo and Handwriting Fonts are trademarks of Expert Software, Inc.

Fonts provided by Weatherly Systems, Inc. © 1996.



This chapter provides a brief overview of *Handwriting Fonts* and identifies the main components of the program.

Program Overview

Welcome to Expert's *Handwriting Fonts*!



Presentation is everything. With *Handwriting Fonts*, your documents will look as unique and professional **as you like**. Use *Handwriting Fonts* in all of your documents. Utilize the technology of your computer, yet keep the personal touch of handwritten cards, letters, memos, and thank you cards. Combine *Handwriting Fonts* with other Expert programs like Labels, Great Presentations, and Personal Presentations to rejuvenate all of your correspondences, mailings and presentations. And of course, you can use *Handwriting Fonts* with your favorite word processing and desktop publishing programs.

This manual is designed for the person who doesn't have a lot of time and is ready to jump right in. Read the overview and definitions below, [or click here if you want to go straight to the tutorial](#).

Terms and Definitions

A B C

Click Press and release the mouse button (usually the left mouse button unless otherwise specified).

Double Click Quickly press and release the mouse button twice.

Choose Highlight an item on the menu or dialog box to initiate an action or command, then press the Enter key or double-click your left mouse button.

Enter Press the Enter or Return key.

Select To mark or choose an item so that the next action or command will be carried out on that item, highlight an option or choice from the menu or design document by clicking on it.

Quit Click on the **Quit** button to exit from the **Font Browser**.

Special Features

Handwriting Fonts is easy to use in Windows® 95, Windows® 3.1, and Macintosh®.

These fonts have been created by Expert's team of program developers. They possess the following features:

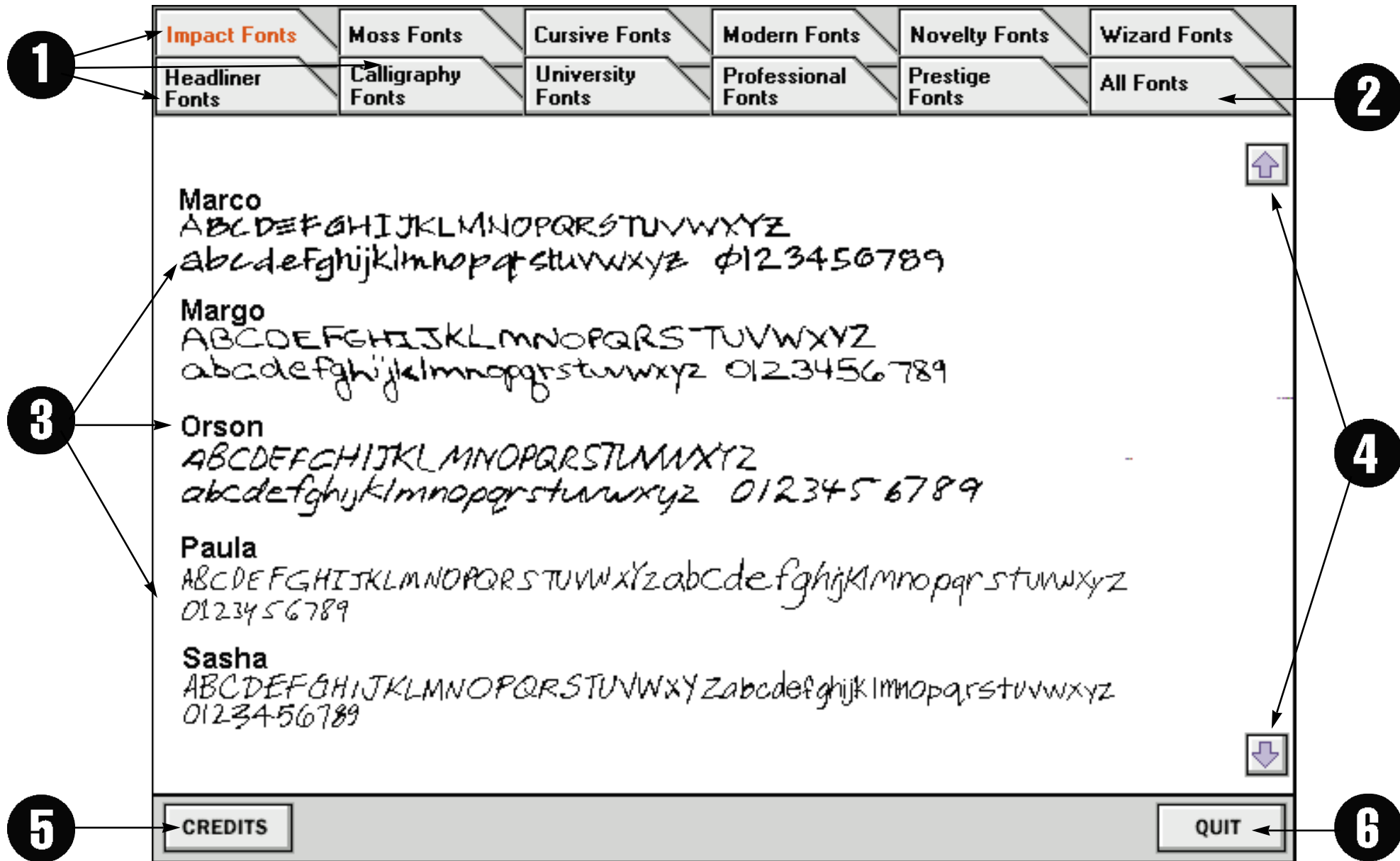
Font Browser: With so many fonts, finding the right one couldn't be easier. Just click on a category you are interested in and view. Each font family contains several different fonts.

Expert Font Installer: The easy-to-use installer allows you to install a font with the click of a button. If you forget what the font looks like, simply launch the **Font Browser**.

[For information on Expert's Online Catalog, Registration and to view the Animated Product Demo, click here.](#)

The Interface

This is the main interface for browsing through the fonts:



1. **Available Fonts** These buttons display all of the font categories available within the program.
2. **All Fonts button** This button lets you view the names and styles of all of the fonts available within the program.
3. **Font Representations** Displays the names of the selected category of fonts.
4. **Scroll buttons** Click on this button to view the previous or the next screen.
5. **Credits button** This button lets you view the program's Credits and Trademark information.
6. **Quit button** Click on this button to exit the program.

***Note:** the **Quit** button automatically exits you from the program.*

You're Invited!

Thank You!

Thinking of You...

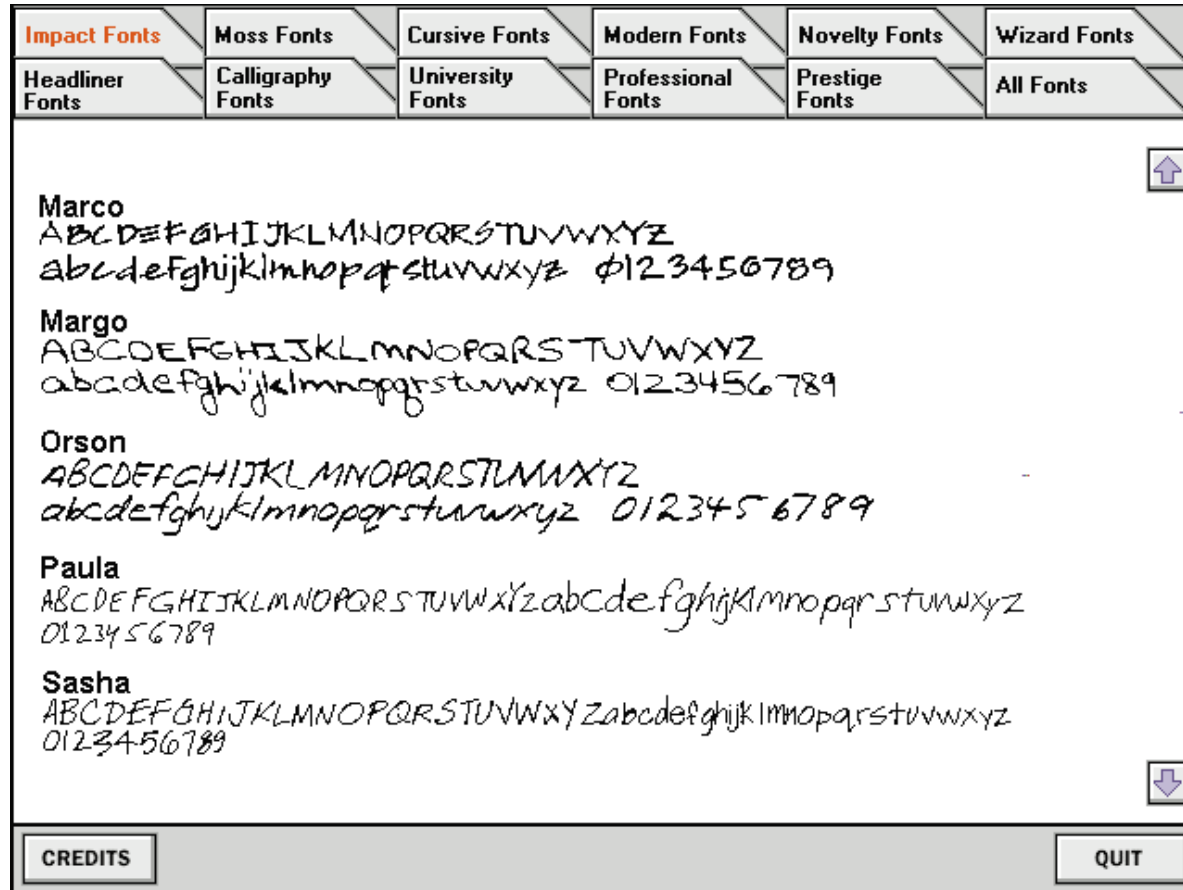
Happy Anniversary

Read this chapter for lessons on how to browse through, select and install the *Handwriting Fonts* you like.

Tutorial

Font Browser

The **Font Browser** lets you view the font styles before you load them into your system.





To see the fonts in a specific category, simply click on the name of the font category tab at the top of the screen; or click on the **All Fonts** tab to display all of the fonts available in the *Handwriting Fonts* program. Each font contained within the selected category appears in alphabetical order. To scroll through the fonts, click on the **Up Arrow** to view the previous screen or the **Down Arrow** to view the next screen. Click on the **Quit** button to exit from the **Font Browser** and return to the **Fonts Installer**.

Font Types

There are eleven categories of *Handwriting Fonts*:

Impact Fonts

Headliner Fonts

Moss Fonts

Calligraphy Fonts

Cursive Fonts

University Fonts

Modern Fonts

Professional Fonts

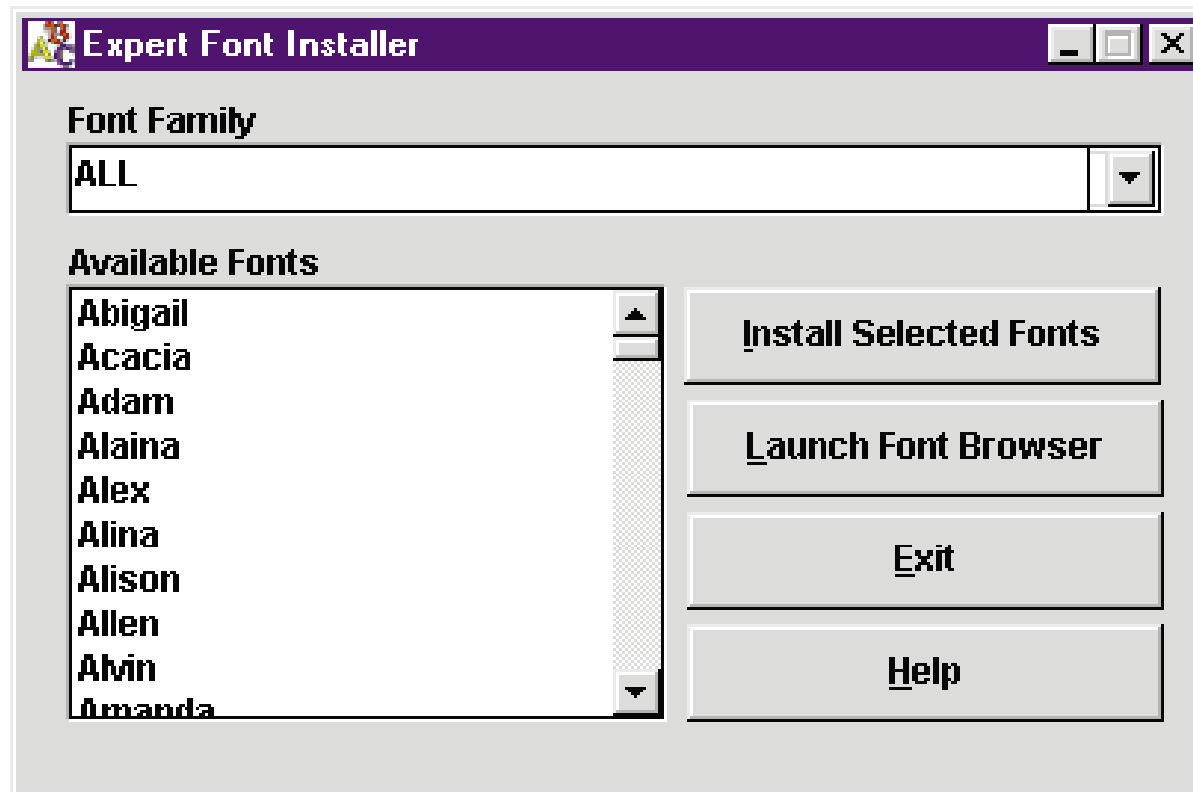
Novelty Fonts

Prestige Fonts

Wizard Fonts

Installing Fonts

Handwriting Fonts includes an easy-to-use font installer. It is strongly recommended that you do NOT install more than 20 fonts at once.



To install the fonts you have selected from the font browser:

1. Click on the drop-down list box and select a **Font Family**. All the fonts available for that font category are then displayed on the main interface screen.
2. Select the font you want to install and click on the **Install Selected Font** button.

To make multiple font selections, press the **CTRL** key while you click on the fonts you want to select. To see an example of the font, click on the **Launch Font Browser** button.

Install Selected Fonts

Launch Font Browser

It is recommended that you do NOT have more than 20 fonts installed on your system at one time. Follow the *Removing Fonts* directions for more information on removing fonts. See below for instructions on Removing Fonts.



Note to Windows 95 users: after you have installed the fonts, click on the **Fonts** icon in Control Panel to update the fonts folder. This should make all fonts visible in the application.

Removing Fonts

A typical TrueType font family requires about 5 kilobytes of Random Access Memory for installation. If you run Windows on a 386 or higher and have a normal-sized swap file, you should be able to load many, many fonts without experiencing a major performance penalty.

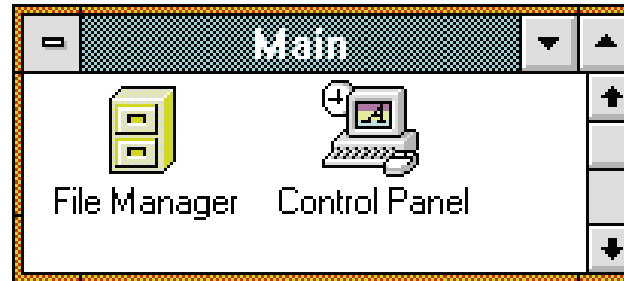
There is a problem, though. Many applications allocate a relatively small amount of memory to hold the names of the fonts. For example, a well-known bug in a major word processor has been affectionately called “the pfont pfun-nies.” When you use more than 255 different fonts in your open document(s), the program completely loses track and substitutes one font for another... for another... for another, and so on.

For system memory considerations and for applications compatibility, sometimes it's best not to install too many fonts. If you need to remove a font or fonts, read the following. [Click here if you are a Windows 95 user.](#)

Windows 3.1 Users

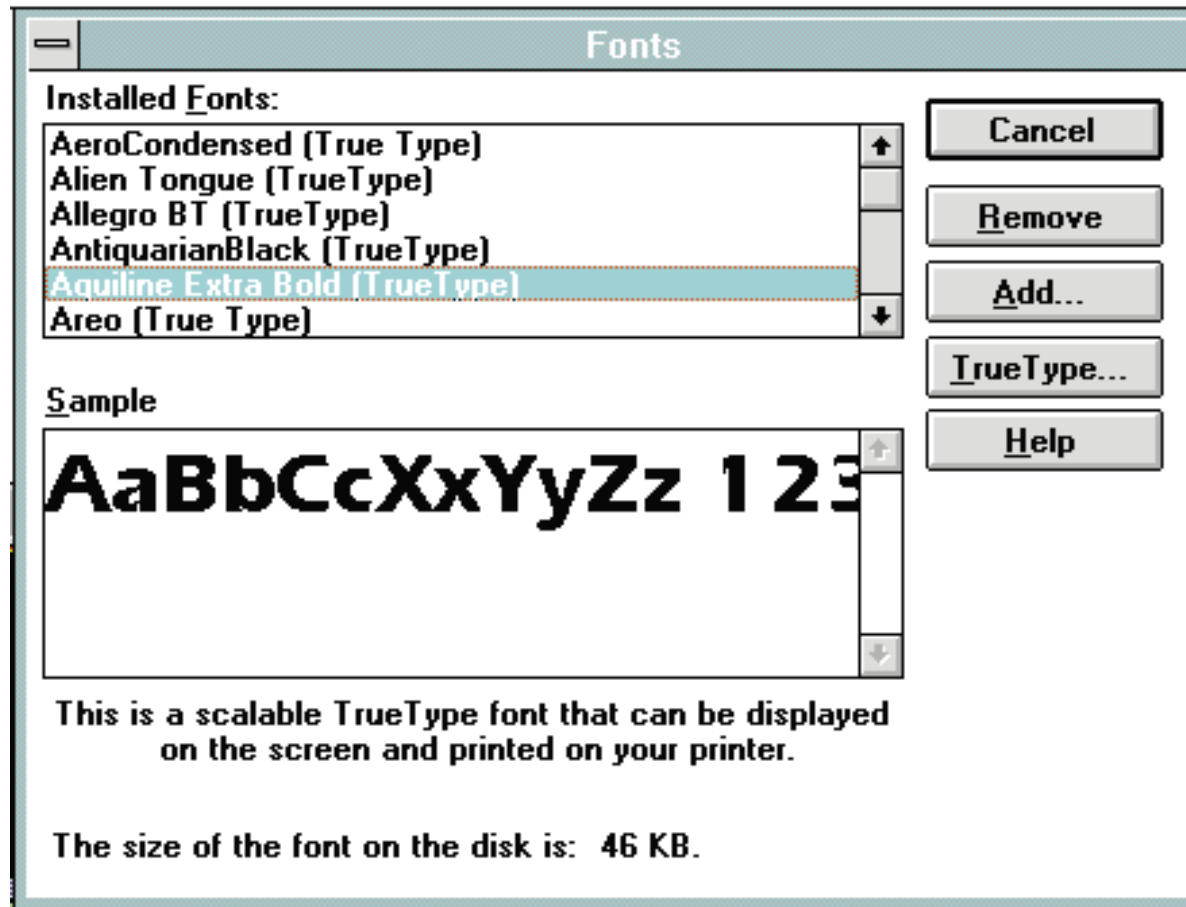
The **Fonts** dialog box allows you to manage the number of fonts installed on your computer and to remove fonts you no longer wish to use. ***Please note: do not delete the default Windows fonts.***

1. Double-click on the **Control Panel** icon located in your **Main** program group.



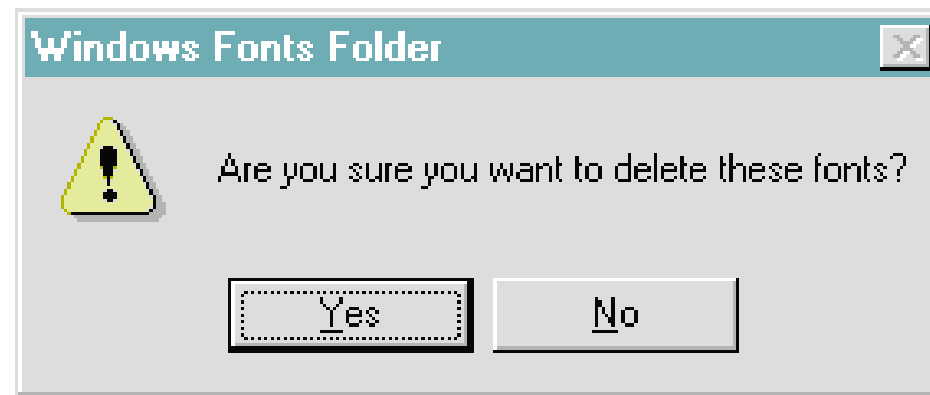
2. Double-click on the **Fonts** icon.

3. The **Fonts** dialog box appears. This dialog box lists all currently installed font files.



4. Highlight the fonts to be deleted. Press the **CTRL** key on your keyboard to select more than one font to be deleted. All selected fonts are highlighted. Click on the **Remove** button.

5. The **Windows Fonts Folder** dialog box appears. Click on the **Yes** button to confirm the removal of the selected font.



6. The **Remove Font** dialog box appears next. Click on the **Yes to All** button to confirm the removal of all selected fonts. Check the **Delete Font File from Disk** option to remove the font from the hard drive.



Windows 95 Users

The **Fonts** dialog box allows you to manage the number of fonts installed on your computer and to remove fonts you no longer wish to use. **Please note:** *do not delete the default Windows fonts.*

1. On the Taskbar, click on the **Start** button.

2. Point to the **Settings** folder and point to and click on the **Control Panels** icon.

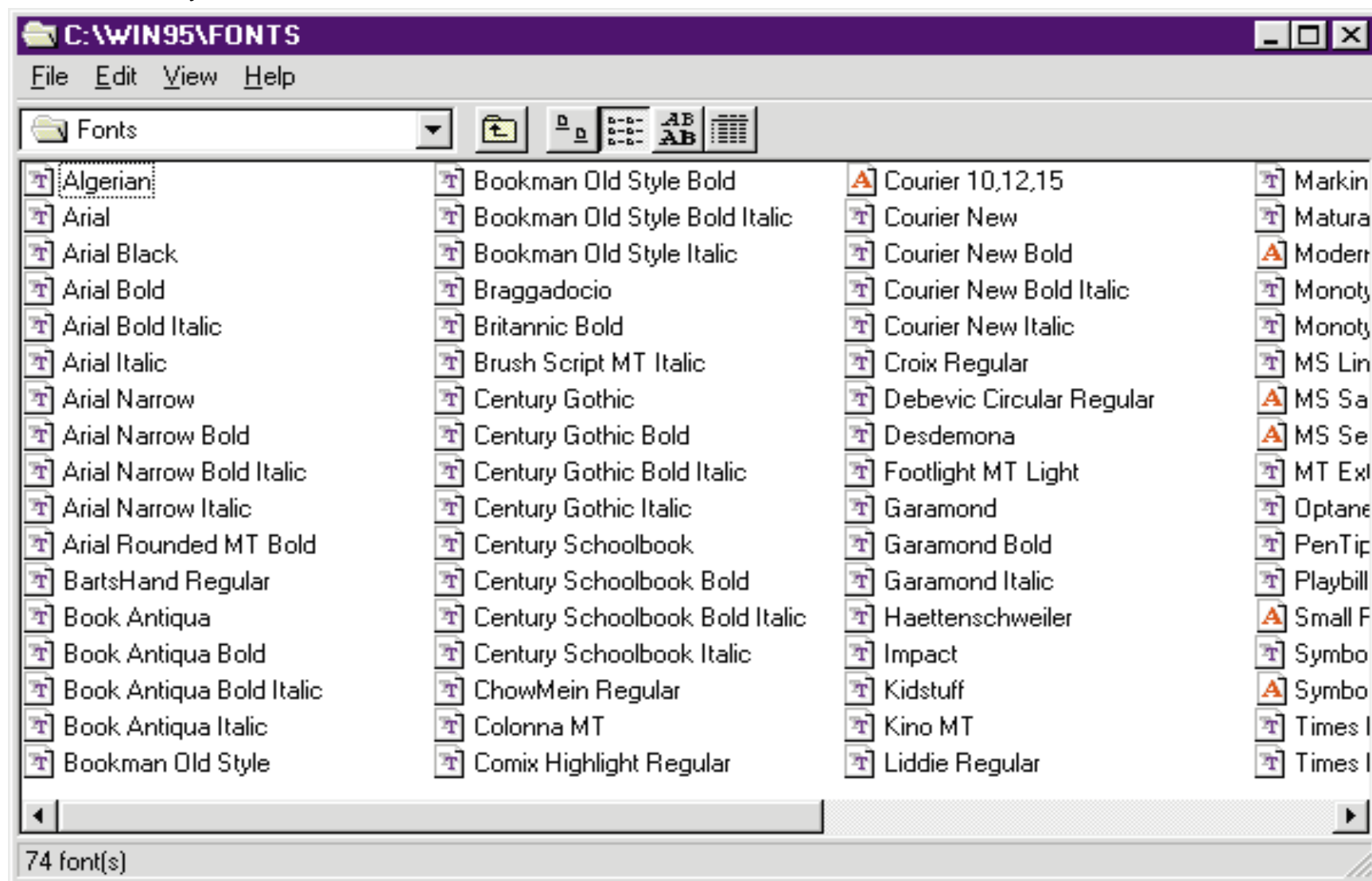


Control Panel

3. In the **Control Panel** window, double-click on the **Fonts Folder** icon. The Fonts window appears. This window lists all currently installed font files.



Fonts



4. Select the font (or fonts) to be removed from your system. Choose **File—Delete**.
5. In the confirmation dialog box, click on the **Yes** button. The selected font(s) are removed from your system.



This chapter answers the most frequently asked questions from users of Expert's font series.



Frequently asked questions



Q: Microsoft Works for Windows won't display all of my fonts. Why?

A: MS Works allocates only 10 kilobytes of RAM for remembering the names of all the fonts installed in the system. If you have many, many fonts, ALL the font names disappear from the font list. The only advice Microsoft offers to users with this problem is to delete the fonts you don't use or copy the fonts to disk and use them only when you need them.



Q: None of the fonts appear in any of my applications. How can I fix this?

*A: Most likely the True Type option is turned off. To check, open the **Control Panel**, choose the **Fonts** icon, and select the **True Type** button. Be sure there is a check in the '**Enable True Type Fonts**' box. If not, click on the blank square and click on **OK**. You are then prompted to restart Windows for the changes to take effect.*



Q: Why do all of the fonts look the same?

A: Windows normally won't tell you when too many fonts are being loaded at start-up. However, when loading an excessive amount of fonts from various resources, some fonts might begin to show as the same generic font. When this happens, you have exceeded the amount of fonts (literally hundreds) that your computer can handle. Delete the fonts you don't use, or store them on disk and use them only when needed.



Q: I have installed the TrueType fonts in Windows 95 and cannot find them in my word processor.

*A: After you have installed the fonts, click on the **Fonts** icon in **Control Panel** to update the fonts folder. This should make all fonts visible in the application.*



Q: I'm having problems with WordPerfect for Windows since I installed fonts.

*A: WordPerfect offers you a choice of two completely different print drivers. The default is the WordPerfect driver. The WordPerfect driver uses only WP fonts -- not TrueType fonts. To use TrueType fonts with WordPerfect for Windows, you must use the Windows Print driver as configured in the **Control Panel** under **Printers**.*



All of the fonts available in the *Handwriting Fonts* program are listed below.

Available Fonts

This is a list of the font families which are included in *Handwriting Fonts*. To see an example of each of the font families listed, click on the **Launch Font Browser** button on the **Font Installer** dialog box.

Abigail	Bethany	Clayton	Emmett	George	Jenine	Kit	Marion	Paula	Saffron	Valerie
Acacia	Betty	Cody	Eric	Gifford	Jenkin	Kora	Matt	Penny	Sammy	Van
Adam	Bingham	Coleman	Erica	Gina	Jeremy	Kramer	Meryl	Perkin	Sandy	Vanessa
Alaina	Bobbie	Corey	Erin	Ginny	Jessie	Kyle	Michael	Perry	Sasha	Veronica
Alex	Brandy	Cormick	Evan	Gino	Jillian	Lanny	Miriam	Peter	Sawyer	Victor
Alina	Brenda	Crosby	Evelyn	Glenn	Jody	Larkin	Monica	Prince	Scott	Vincent
Alison	Brenden	Crystal	Everly	Grady	John	Laarrie	Monty	Queenie	Sefton	Walker
Allen	Brett	Cutie	Ewing	Grant	Jolene	Lauren	Morgan	Quentin	Serge	Wally
Alvin	Brody	Darby	Fanny	Greer	Josh	Laurie	Myra	Quest	Sheryl	Wangley
Amanda	Brook	Darin	Farina	Haley	Josh	Lawford	Nancy	Quinn	Skyler	Wayne
Amber	Bruce	Darlene	Farrah	Hank	Juliana	Lee	Nappy	Rachel	Stacy	Webster
Angela	Bud	Dave	Fenton	Hansford	Julie	Leonard	Nat	Ralph	Stanley	Weldon
Annie	Burke	Deanna	Finian	Hanson	Justin	Leroy	Ned	Ramsey	Stewart	Wendy
Archie	Burton	Debbie	Fletcher	Harmon	Kane	Lesley	Nelly	Ray	Susan	Willy
Ardley	Calvin	Denton	Flint	Henry	Karen	Lester	Nettie	Reardon	Tanya	Wilson
Arron	Camden	Derek	Flora	Herrick	Karin	Liberty	Newell	Reed	Tasha	Wilton
Ashton	Candy	Diana	Forrest	Hershel	Karl	Linford	Nichole	Ricky	Taylor	Winston
Aster	Carly	Donald	Foster	Higgin	Kasper	Lisa	Nicky	Robin	Terry	Yancy
Aubrey	Caroline	Donny	Frank	Hodge	Kathryn	Lloyd	Nicola	Roger	Thelma	Yank
Audrey	Carter	Dorothy	Franklin	Hunter	Keith	Luana	Nolan	Ronald	Toby	Young
Austin	Cathy	Dunley	Frasier	Irving	Kelly	Lydia	Norton	Ronnie	Todd	Zack
Avery	Catt	Dunn	Frosty	Ivy	Kelsey	Lydia	Novia	Roscoe	Tracy	Zonker
Babcock	Chase	Eddie	Fulton	Jack	Kenneth	Mandy	Ollie	Roslin	Trask	
Barry	Chelsie	Edgerton	Gail	Jackie	Kiana	Manny	Opal	Rossy	Tricia	
Bart	Cheryl	Edmond	Garth	James	Kim	Marcel	Orson	Royden	Trixie	
Bernie	Chick	Eliott	Gary	Janice	Kimball	Marcie	Oscar	Ruby	Tully	
Berry	Christine	Ellie	Gavin	Jason	King	Marco	Parker	Rusty	Tyler	
Beryl	Cid	Emily	Gemma	Jeffrey	Kirby	Margo	Patricia	Ryan	Ursa	

Registration, Online Catalog and Animated Demo Information

Registration

By registering, Expert Software, Inc. can keep you informed of the latest changes and improvements to this product, as well as information on our other products. Sending in your registration card also allows you to receive free product support.

In order to register this product, either fax via modem or print the registration form.

Note: If you did not register during installation, you need to re-install the program in order to redisplay the Expert Software Registration Card.

To fax your product registration using the modem:

- 1. Fill out the appropriate information in each field.*
- 2. Click on the COM Port section field to display a list of available ports.*
- 3. Select the appropriate Port for your computer.*
- 4. Click on the Fax Card button to transmit the information.*

TIP: if you don't know what Port your fax/modem is connected to, try a different COM Port number.

If you prefer, you can print the registration card and print it by clicking on the **Print Card** button. Fax the printed form to: (305) 569-1360. Or mail it to:

Mail to: **Expert Software, Inc.**
 P.O. Box 144506
 Coral Gables, FL 33114-9796

Fax it to: **(305) 569-1350**

Starting the Online Catalog

When you register the program, the Online Catalog will be installed. To access the Online Catalog which allows you to preview other exciting Expert products:

Windows® 95 users

Insert the Expert CD into your CD-ROM drive. On the Taskbar, click on the **Start** button, point to the Programs folder and the Hand Fonts folder and finally, point to and click on **Expert Online Catalog**.

Windows® 3.1 users

Insert the Expert CD into your CD-ROM drive. Locate the Hand Fonts program group and maximize or double-click on the Expert Software icon. Once it opens, double-click on the **Expert Online Catalog** icon.

Microsoft Video for Windows

To launch the installation of Microsoft Video for windows, choose **File—Run** then go to **d:\mvfw\setup**. Watch an overview of the program by running Fonts.avi located in the Expert folder.

Expert Software License Statement

This software is protected by both United States Copyright Law and International Treaty provisions. Expert Software, Inc. grants you this license and your continued use confirms your agreement. Therefore, you must treat the software “just like a book,” with the following single exception: Expert Software, Inc. authorizes you to make archival copies of the software for the sole purpose of backing up your software and protecting your investment from loss.

By saying “just like a book,” Expert Software, Inc. means, for example, that the software may be used by any number of people and may be freely moved from one computer to another, so long as there is no possibility of being used at one location while it's being used in another. This is just like a book that cannot be read by two different people in two different places at the same time; neither can this software be used by two different people in two different places at the same time.

This agreement shall be construed, interpreted, and governed by the laws of the state of Florida and shall inure to the benefit of Expert Software, Inc. its successors, administrators, heirs, and assigns.

Limited Warranty

Limited warranty on product disks. To the original buyer only, Expert Software, Inc. warrants the disk or disks on which this product is recorded to be free of defects in material and workmanship under normal use for a period of 90 days from the purchase date. Any implied warranties of merchantability or fitness for a particular purpose are limited in duration to the period of 90 days from the date of purchase. Your sole and exclusive remedy in the event of a defect in material or workmanship under normal use is expressly limited to replacement of the defective item.

This warranty gives you specific legal rights, and you might also have other rights which vary from state to state.

No warranty on product software or User's Guide. Even though Expert Software, Inc. has tested the software and User's Guide and reviewed their contents, Expert Software, Inc. and its distributors and dealers make no warranties, either expressed or implied, with respect to the fitness for a particular purpose. The software and User's Guide are distributed solely on an as is basis. The entire risk as to their quality and performance is with you. Should either the software or User's Guide or both prove defective, you (and not Expert Software, Inc. and its distributors and dealers) assume the entire cost of all necessary servicing, repair, or correction. Expert Software, Inc. and its distributors and dealer will not be liable for direct, indirect, incidental, or consequential damages resulting from any defects in the software or User's Guide, even if they have been advised of the possibility of such damages.

Some states do not allow limitations on how long an implied warranty lasts or the exclusion or limitation of incidental or consequential damages, so the above limitations or exclusions might not apply to you.

Copyright

© 1996 Expert Software, Inc. All Rights Reserved. All Rights Reserved Worldwide. The user's guide and the software described in it are copyrighted with all rights reserved. The user's guide or software may not be copied in whole or part, without written consent of Expert Software, Inc. You may not sell, rent, lease or transfer copies of the user's guide or software in any other way without the prior written consent of Expert Software, Inc.

Trademarks

Expert Software and the Expert brand logo are trademarks of Expert Software, Inc. Microsoft and Windows are registered trademarks of Microsoft Corp. Macintosh is a registered trademark of Apple Computer Inc. All other trademarks are acknowledged.

Expert Product Support Policy

Your purchase of an Expert product includes free product support to help you get the most out of your software. All Expert products are thoroughly tested and come with a user's guide and/or help file. In most cases, the answer to many of your questions are in this guide and/or the help file.

If you are having problems starting or running the program, please feel free to give us a call. We can be reached at (305) 567-9996, Monday through Friday, 9:00AM to 5:00PM EST (Eastern Standard Time).

When you call, you should be at your computer. Be ready to give the Product Support Specialist the 10-digit program version number from the front of your program disk or back of the CD jewel case, as well as the following information:

If you have a Macintosh-compatible computer:

- Please have the model, system software version and amount of memory available.

If you have Windows— or MS-DOS—compatible computer:

- The version of DOS that is installed on your computer. (You can determine the version by typing VER at the DOS prompt.)
- The version of Windows® installed on your computer.
- The type of hardware you are using:
 1. The brand of computer you own,
 2. CPU type (80386, 80486, Pentium),
 3. Video type (EGA, VGA, Super VGA),
 4. Model and type of video card, and
 5. Model and type of printer.
- The exact wording of any messages that appeared on the screen.
- What happened and what you were doing when the problem occurred.
- We encourage Windows® (or MS-DOS 6.x) users who need product support to print an MSD report. Have it available for the Product Support Specialist who answers your call. You will find the MSD (Microsoft Diagnostics) program in either the Windows or the DOS directory.

In case of defective disks

If the disk or disks should fail within 90 days of purchase, please return the original disk with proof of purchase for FREE replacement. After 90 days from date of purchase, please include \$9.50 for replacement. You can obtain a replacement disk of the program by returning the defective copy, and your proof of purchase to Expert Software, Inc. Attention: Customer Service, P.O. Box 144506, Coral Gables, FL 3114-4506.